



WAUKEE

COMMUNITY SCHOOL DISTRICT

RTL Plan

Consideration

November 9, 2020

District Priorities

1. To keep students and staff safe and healthy.
2. To keep students and staff who have chosen the in-person option to stay in school.



Things to Consider



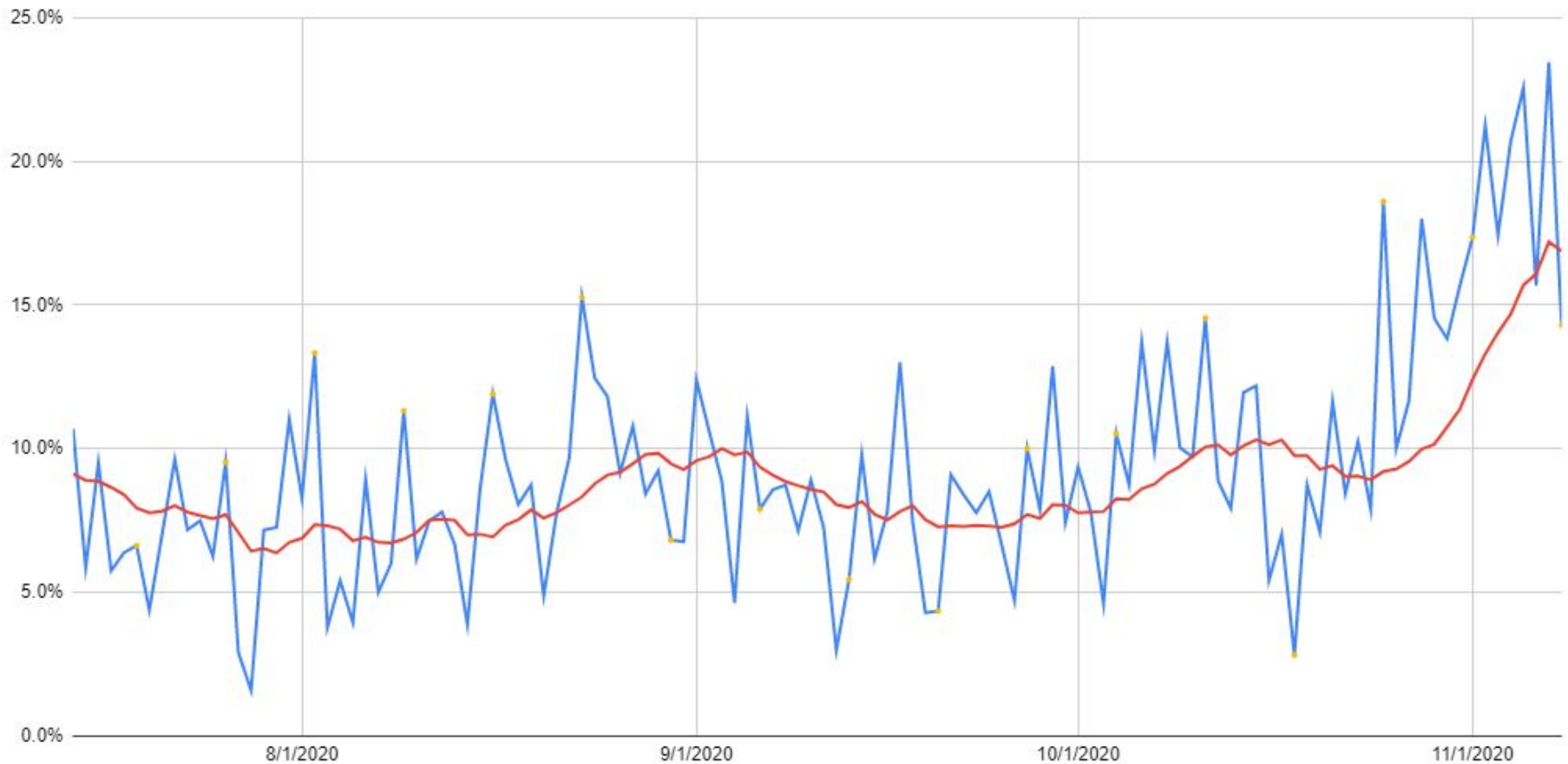
1. Positivity Rate in Dallas County rolling 14-day
2. Student Attendance Rates
3. Staff Attendance Rates
4. Zip Code Data/Cases per 100,000

Dallas County Positivity Rate



Dallas County Positivity Rates

■ Daily positivity rate ■ State 14-day average (average of averages) ■ Sundays



Current Dashboard



| | |
|--|---|
| 96 | Student(s) currently testing positive (total students *9,217 in-person) |
| 22 | Staff members currently testing positive (total staff 1,800) |
| 500 | Staff and/or students currently isolating/quarantining by Dallas County Public Health |
| 602 | Number of individuals being monitored by school nurses in buildings. |
| Brookview Elementary Eason Elementary Grant Ragan Maple Grove Prairieview School Radiant Elementary Shuler Elementary South Middle School Timberline School Waukee Elementary Walnut Hills Elementary Waukee High School Waukee Middle School Woodland Hills Elementary | Current buildings or programs with known positive cases. <i>*All individuals impacted have been contacted.</i> |

Student Positive Cases

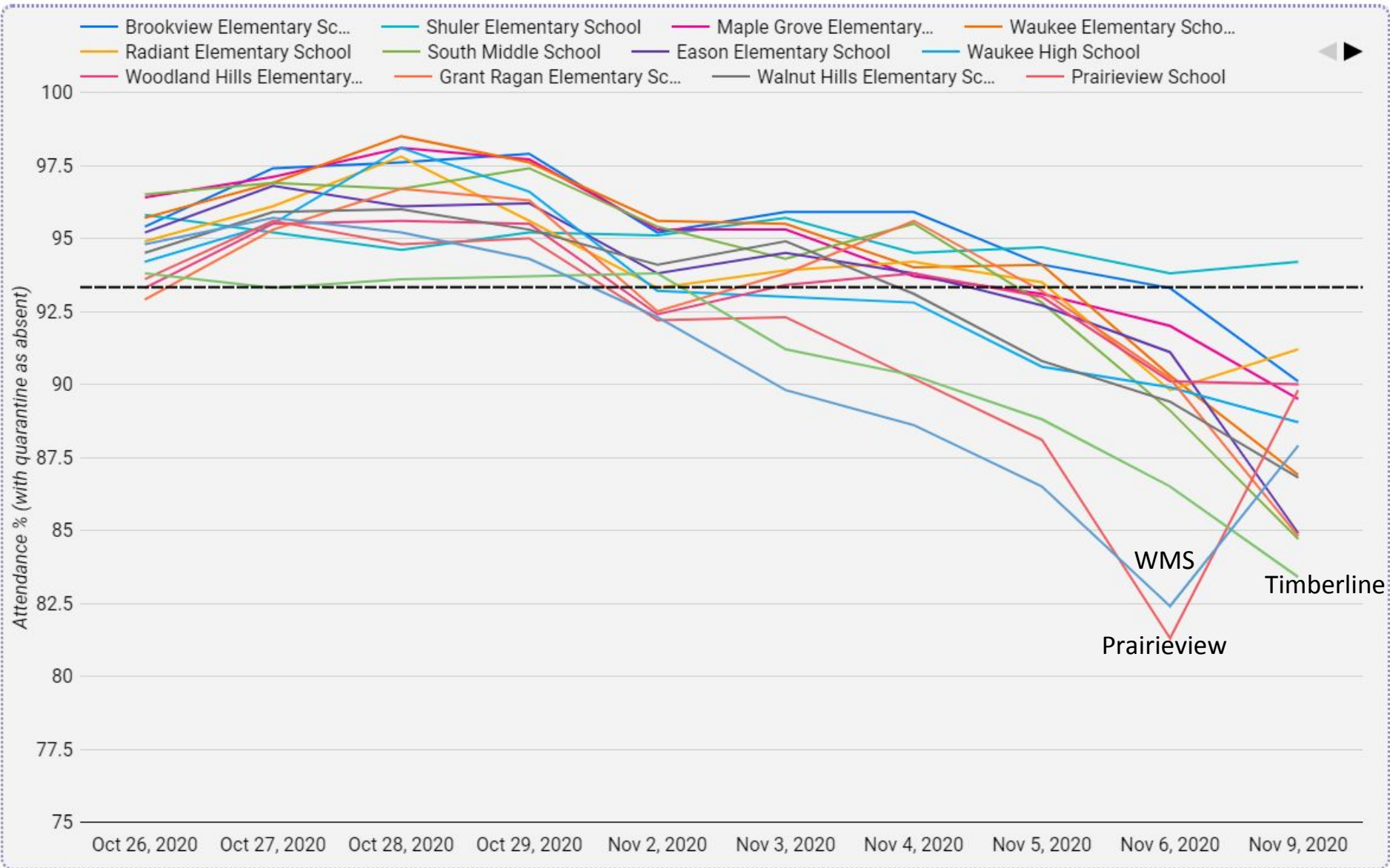


Total number of positive cases as of today: 96

Numbers today per building:

| Brookview, Eason, Maple Grove, Radiant, Shuler, South Middle, Woodland Hills, Waukee Elementary | Cases present in buildings and programs (between 1-5) |
|---|---|
| Grant Ragan, Walnut Hills | 6 |
| Timberline School | 9 |
| Waukee High School | 13 |
| Waukee Middle School | 20 |
| Prairieview School | 21 |

Student Attendance Data



* students in quarantine are treated as absent for this dataset



Student Attendance Data

| school | CALENDARDATE / Attendance % (with quarantine as absent) | | | | | | | | |
|----------------------------------|---|--------------|--------------|-------------|-------------|-------------|-------------|-------------|-------------|
| | Oct 27, 2020 | Oct 28, 2020 | Oct 29, 2020 | Nov 2, 2020 | Nov 3, 2020 | Nov 4, 2020 | Nov 5, 2020 | Nov 6, 2020 | Nov 9, 2020 |
| Brookview Elementary School | 97.4 | 97.6 | 97.9 | 95.2 | 95.9 | 95.9 | 94.1 | 93.3 | 90.1 |
| Eason Elementary School | 96.8 | 96.1 | 96.2 | 93.8 | 94.5 | 93.8 | 92.7 | 91.1 | 84.9 |
| Grant Ragan Elementary School | 95.3 | 96.7 | 96.3 | 92.5 | 93.8 | 95.6 | 93.2 | 90.2 | 84.8 |
| Maple Grove Elementary School | 97.1 | 98.1 | 97.7 | 95.3 | 95.3 | 93.7 | 93.1 | 92.0 | 89.5 |
| Prairieview School | 95.6 | 94.8 | 95.0 | 92.2 | 92.3 | 90.2 | 88.1 | 81.3 | 89.8 |
| Radiant Elementary School | 96.1 | 97.8 | 95.6 | 93.3 | 93.9 | 94.2 | 93.5 | 89.8 | 91.2 |
| Shuler Elementary School | 95.2 | 94.6 | 95.2 | 95.1 | 95.7 | 94.5 | 94.7 | 93.8 | 94.2 |
| South Middle School | 96.9 | 96.7 | 97.4 | 95.4 | 94.3 | 95.5 | 92.8 | 89.1 | 84.7 |
| Timberline School | 93.3 | 93.6 | 93.7 | 93.8 | 91.2 | 90.3 | 88.8 | 86.5 | 83.4 |
| Walnut Hills Elementary School | 95.9 | 96.0 | 95.3 | 94.1 | 94.9 | 93.1 | 90.8 | 89.4 | 86.8 |
| Waukee Elementary School | 96.9 | 98.5 | 97.6 | 95.6 | 95.5 | 94.0 | 94.1 | 90.3 | 86.9 |
| Waukee High School | 95.5 | 98.1 | 96.6 | 93.2 | 93.0 | 92.8 | 90.6 | 89.9 | 88.7 |
| Waukee Middle School | 95.7 | 95.2 | 94.3 | 92.3 | 89.8 | 88.6 | 86.5 | 82.4 | 87.9 |
| Woodland Hills Elementary School | 95.5 | 95.6 | 95.5 | 92.4 | 93.4 | 93.8 | 93.0 | 90.1 | 90.0 |

* students in quarantine are treated as absent for this dataset



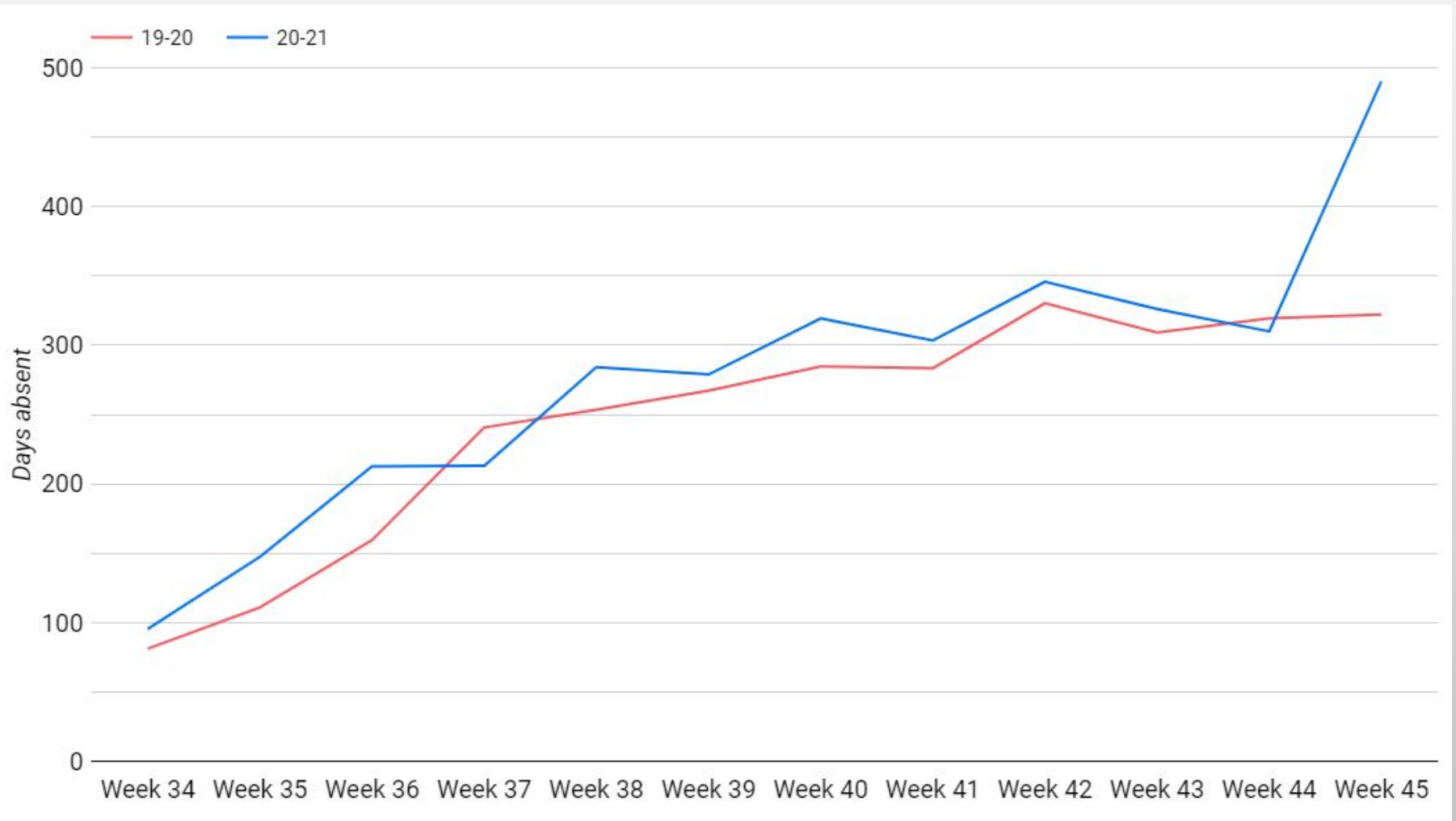
Staff Positive Cases

Total number of positive cases as of today: 22

Numbers today per building:

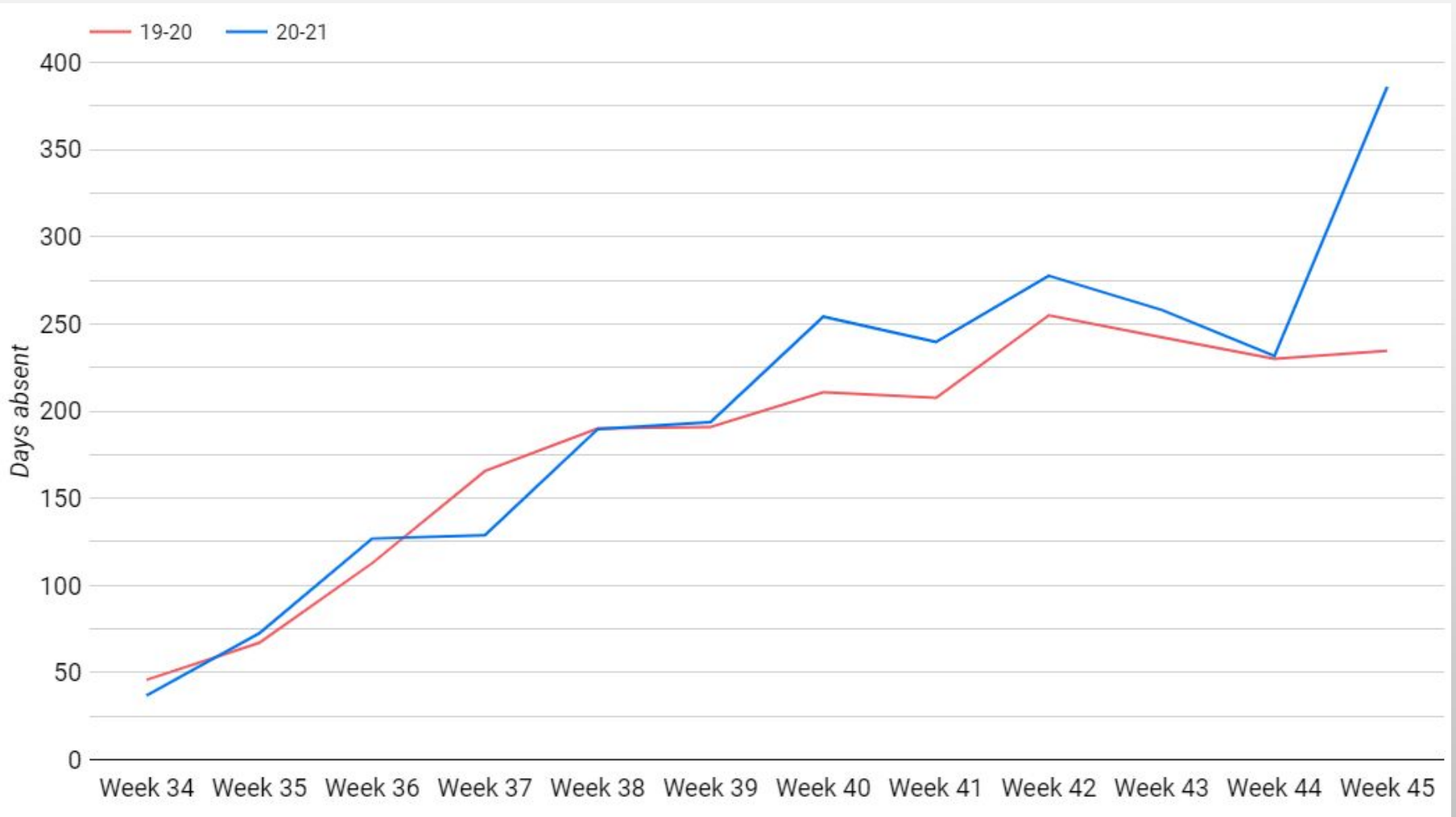
| | |
|--|--|
| Eason, Grant Ragan, Maple Grove, Shuler, Waukee Elementary | 0 |
| Brookview, Radiant, Walnut Hills, Woodland Hills, Prairieview, South Middle, Timberline, Waukee Middle, Waukee High School, District Office/Operational Buildings, Child Care | Cases present in buildings and programs (between 1-5) |

Total weekly staff (all staff) absences due to illness (personal and family)



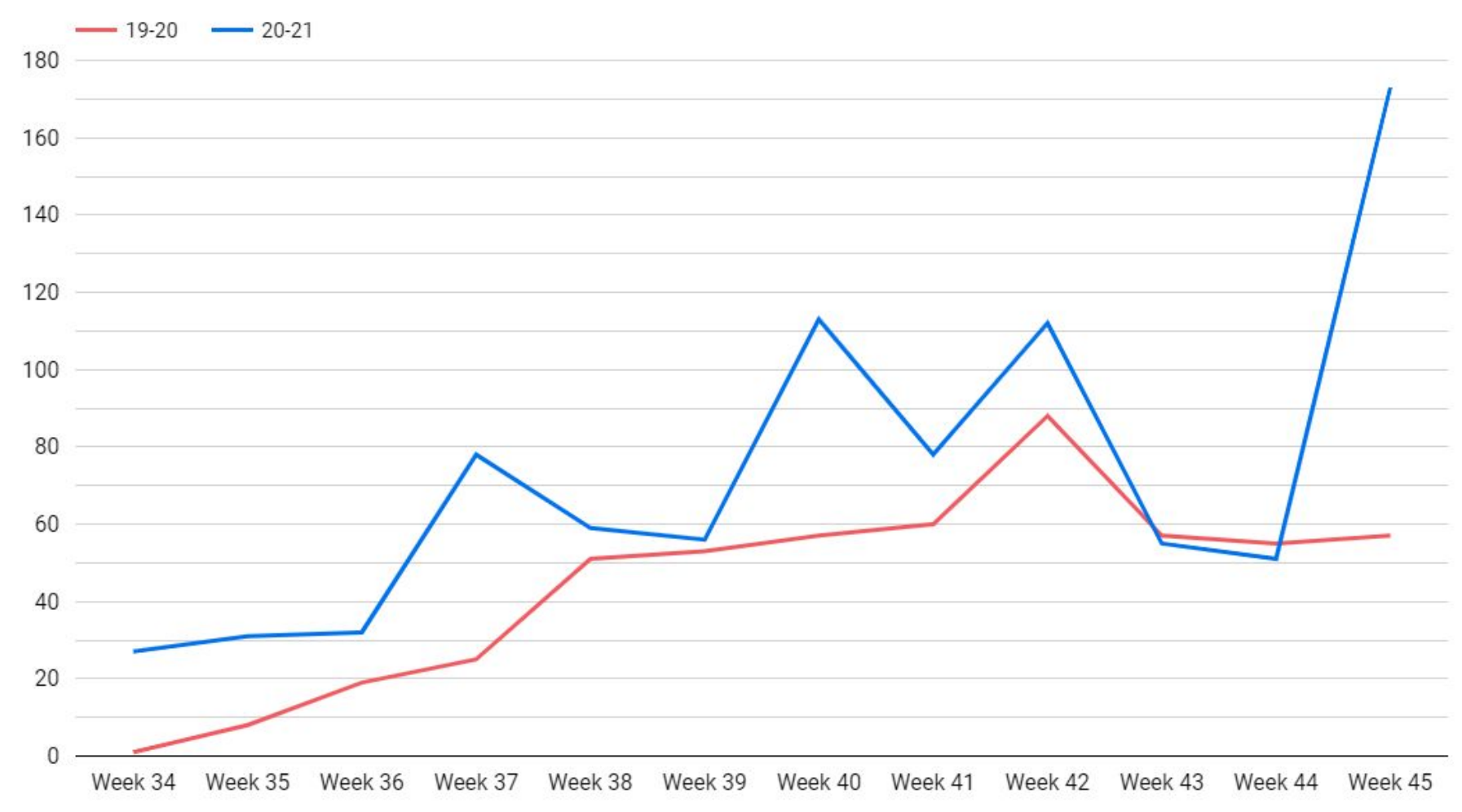
*Note - Week numbers count from January 1. Week 45 was last week, November 2-6

Total weekly teacher and associate absences due to illness (personal and family)



*Note - Week numbers count from January 1. Week 45 was last week, November 2-6

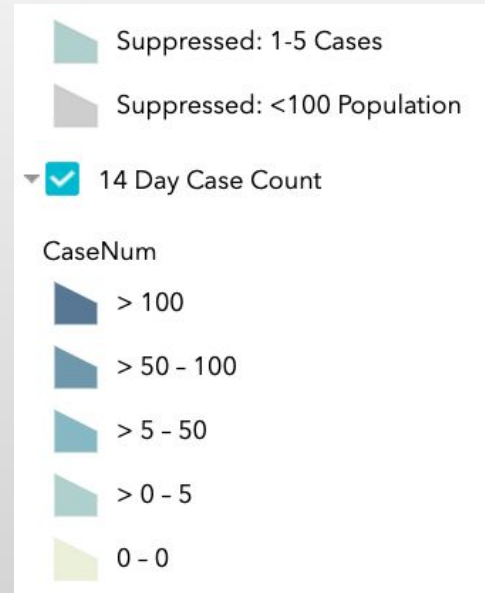
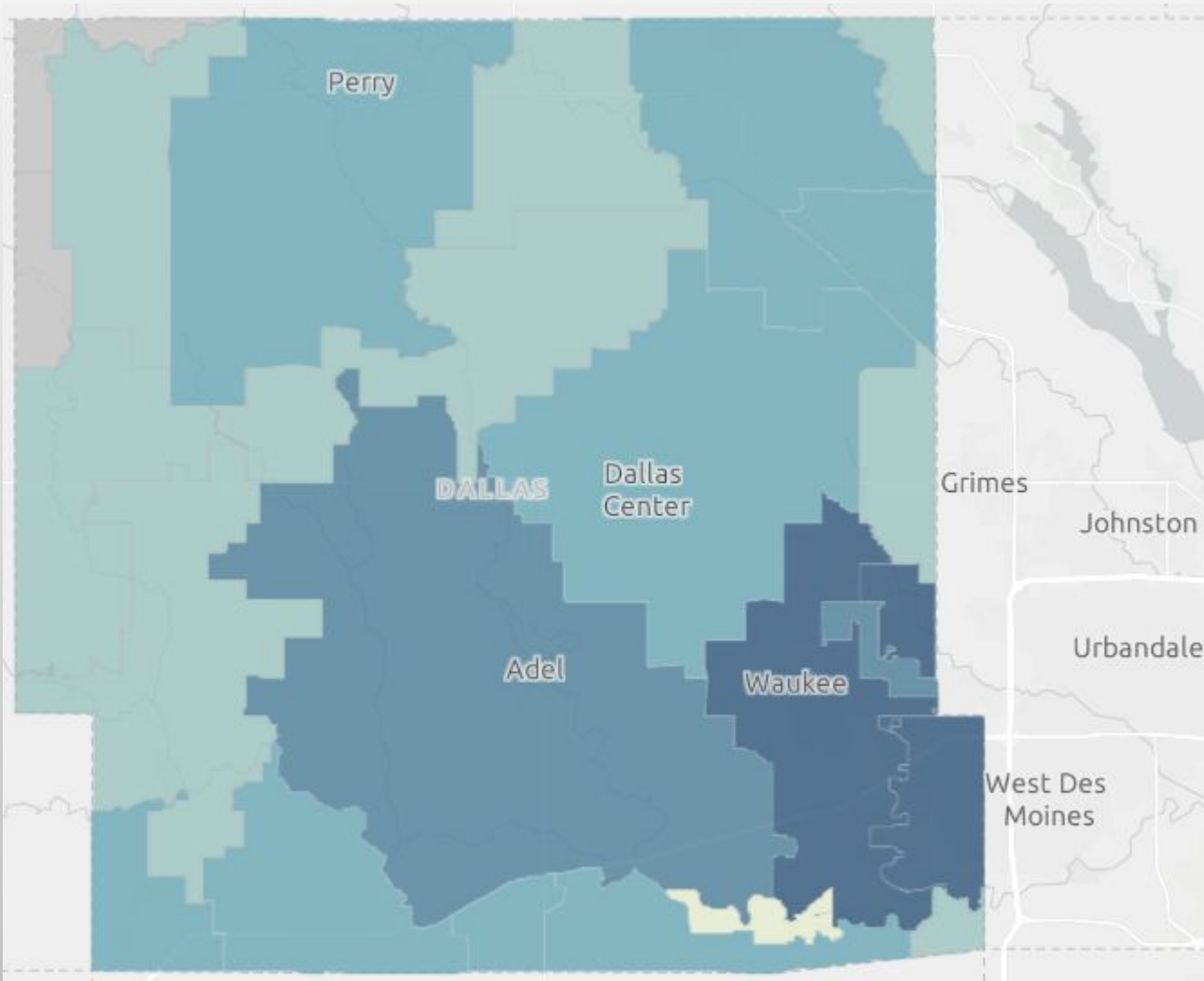
Total weekly unfilled substitute vacancies (teachers and associates)



*Note - Week numbers count from January 1. Week 45 was last week, November 2-6



Zip Code Data



| Dallas County - WCSD | |
|-----------------------------|-----------|
| Clive | 81 (49) |
| Urbandale | 115 (48) |
| Waukee | 289 (114) |
| West Des Moines | 187 (90) |



Recommendation

The administration recommends approval to submit the fully online waiver for Prairieview School, Timberline School, and Waukee Middle School.

For clarity, that means each school will be fully online this week, and if approved, will be fully online through November 27th, with a proposed return of November 30th.