

Joint Enrollment Report 2012

Jeremy Varner, Division Administrator

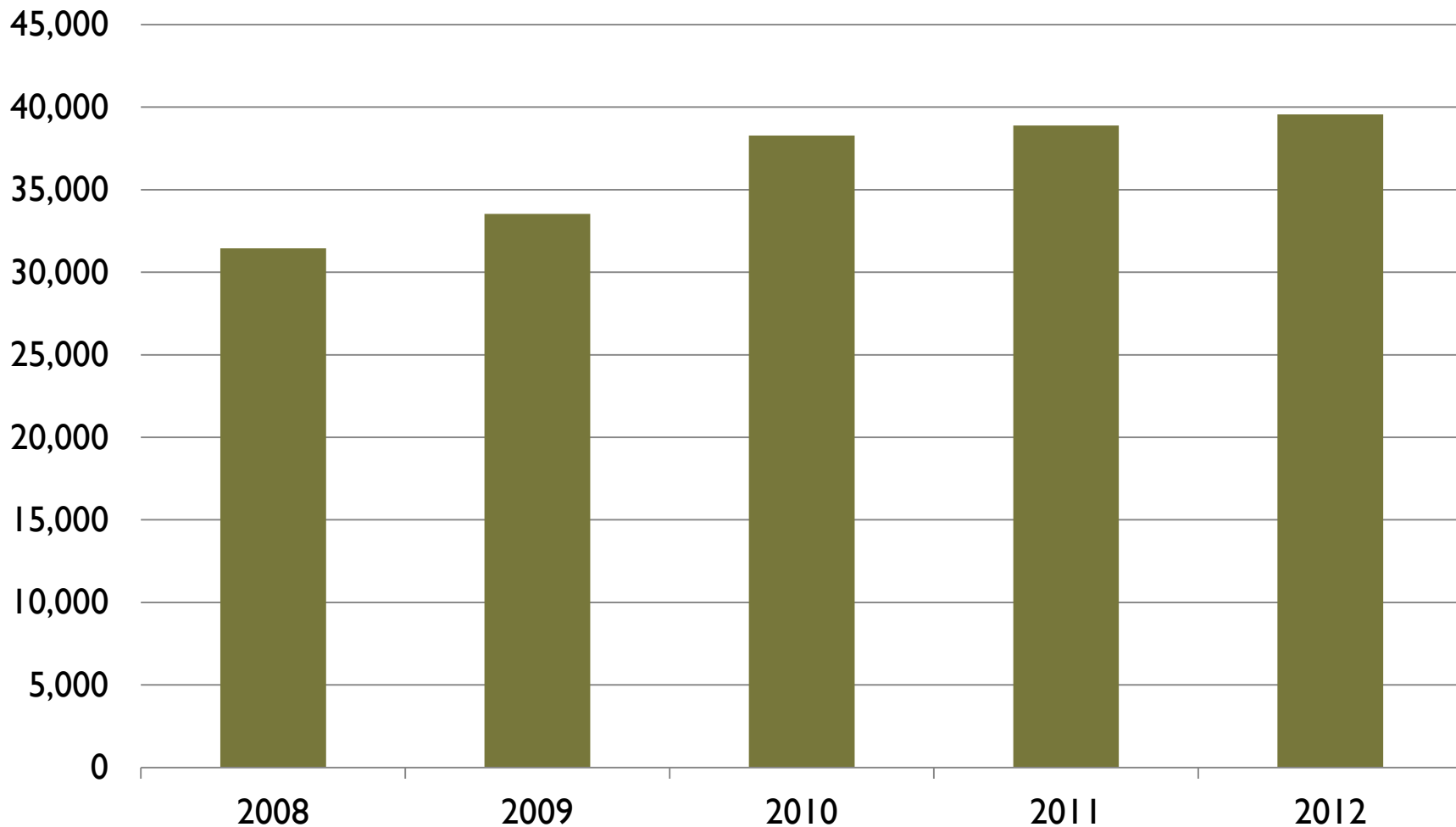
3.28.2013



COMMUNITY COLLEGES
BUREAU OF ADULT, CAREER, AND COMMUNITY COLLEGE EDUCATION

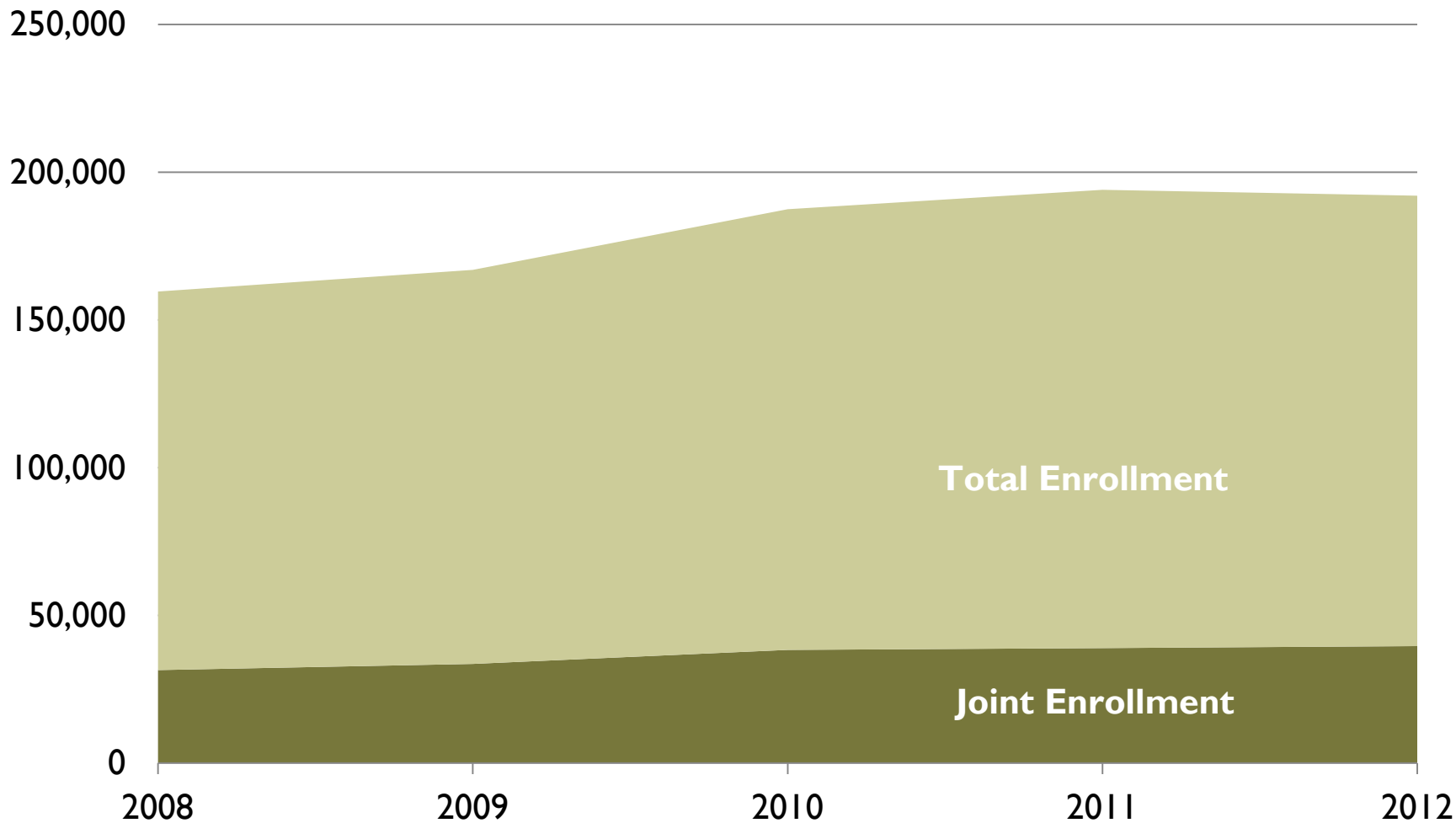
2

Joint Enrollment



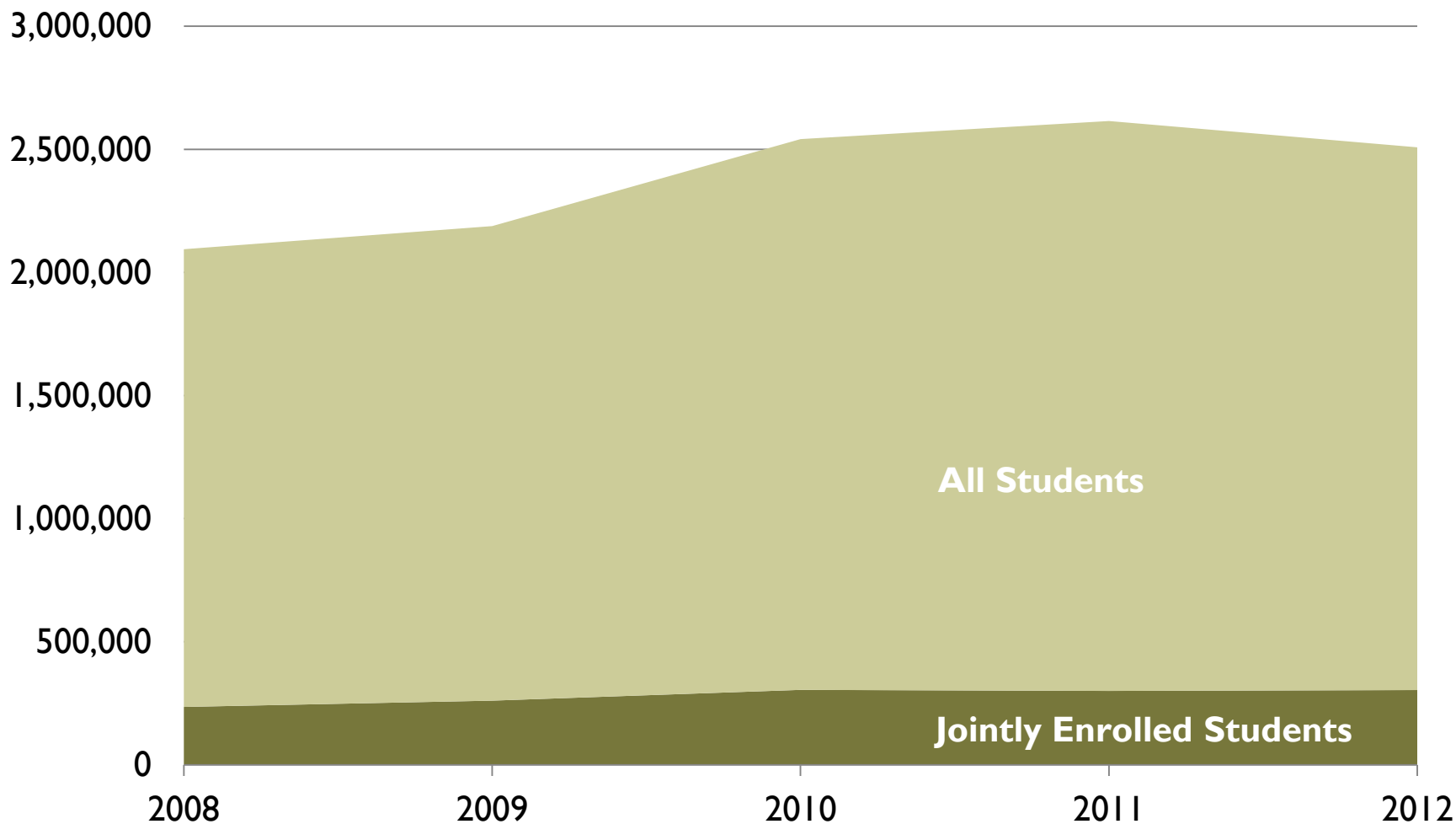
3

Total Enrollment



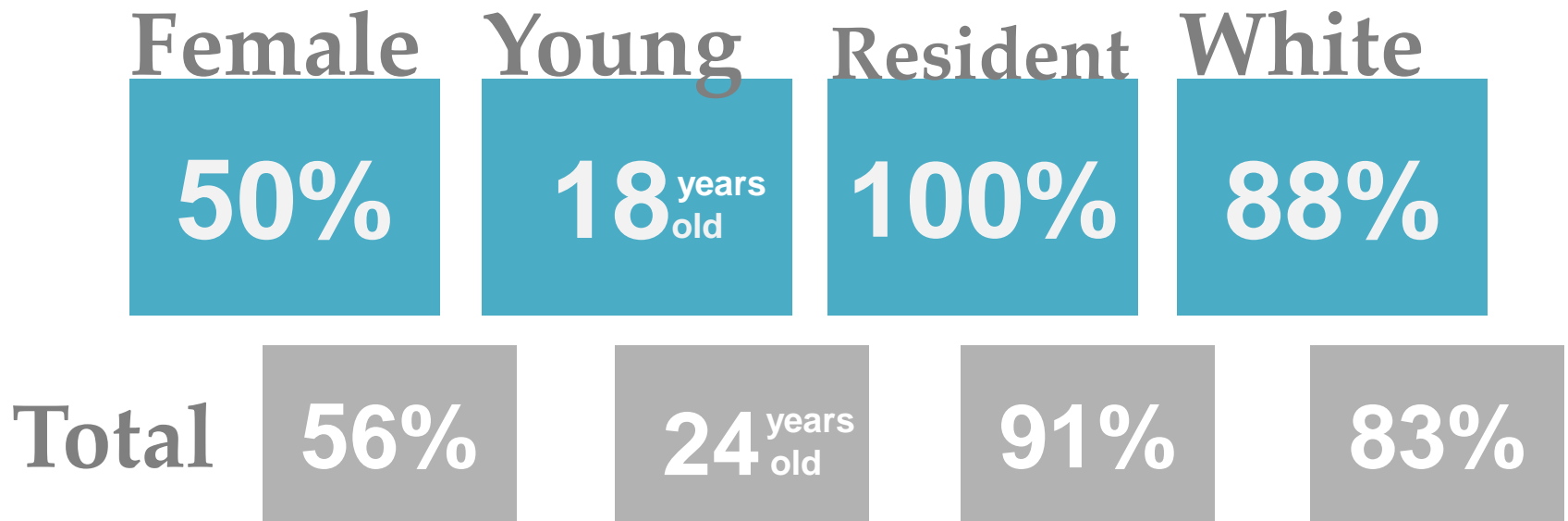
4

Total Credit Hours



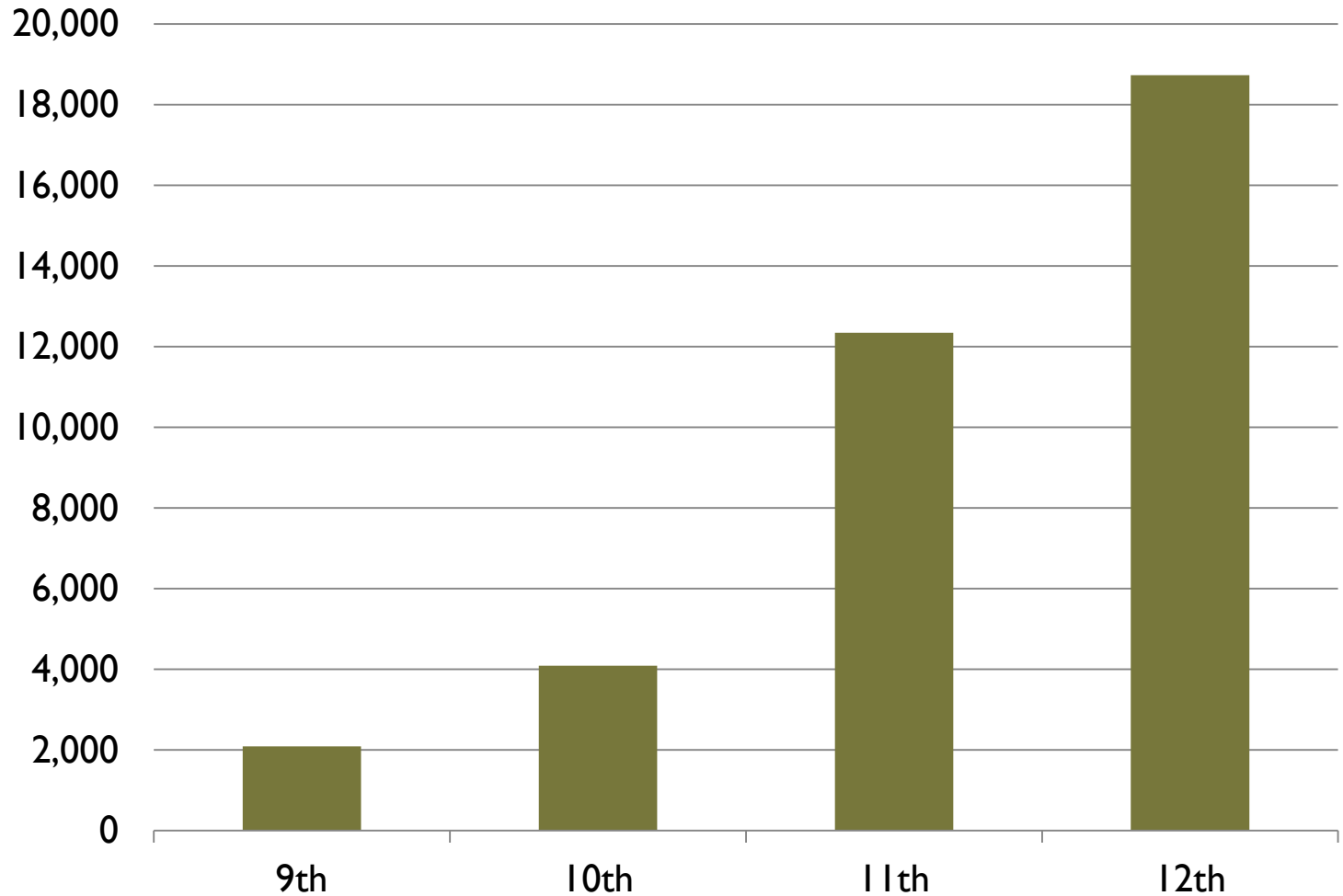
5

Student Demographics



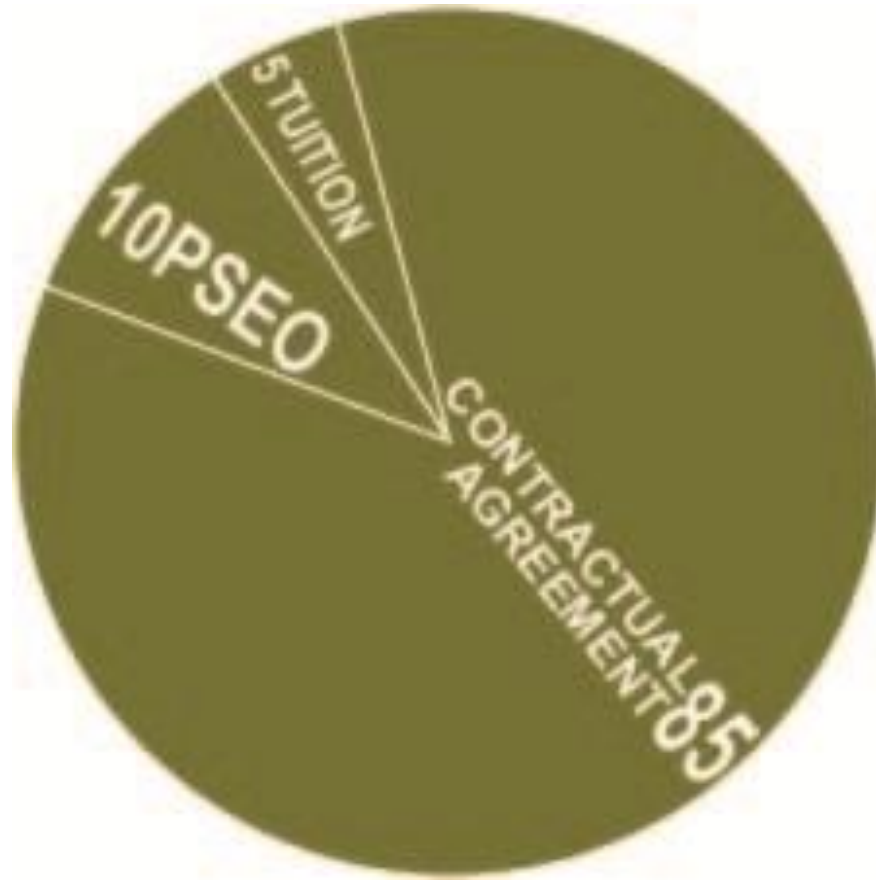
6

Student Grade Level



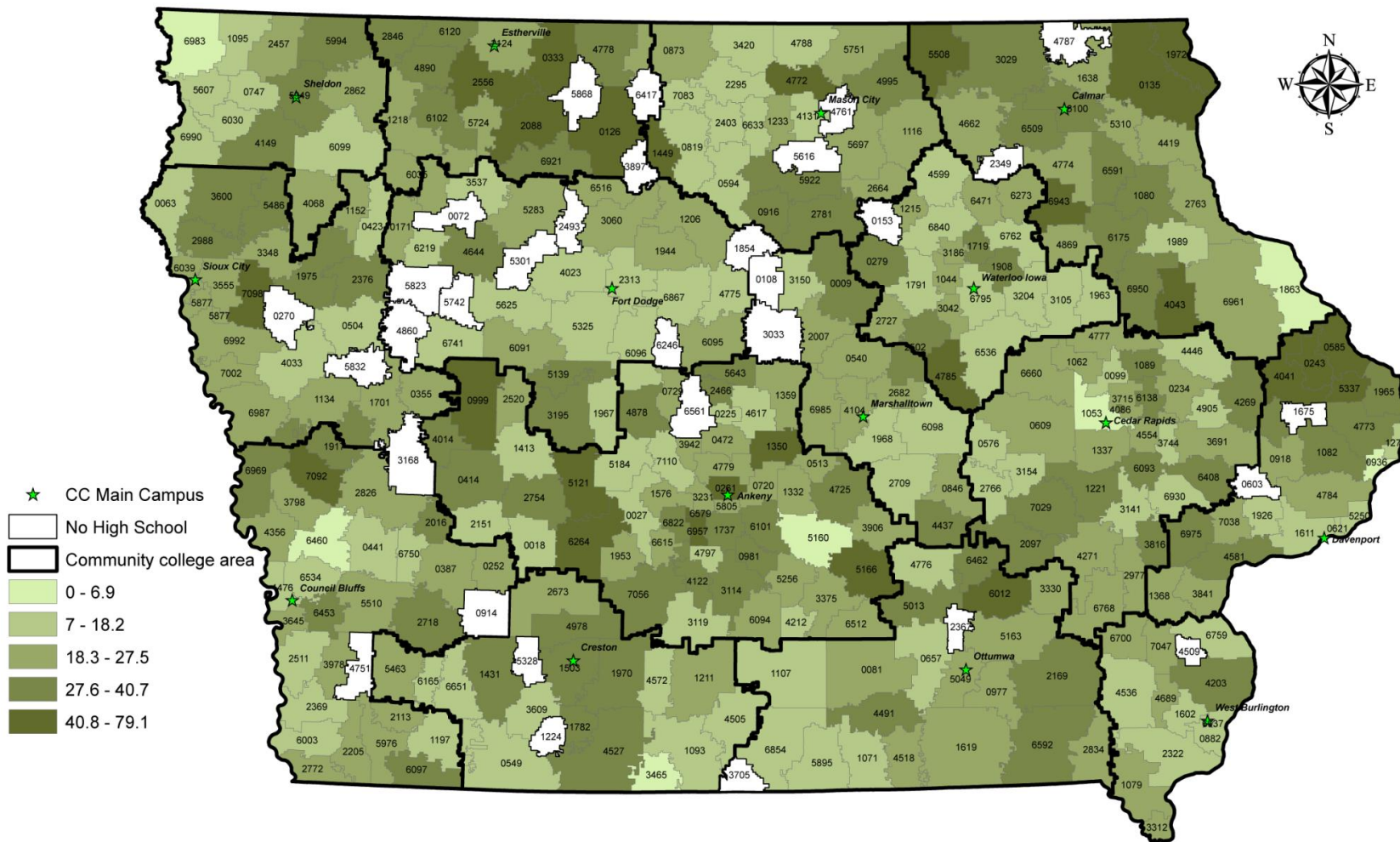
7

Offering Arrangement



8

Percentage of HS Students Enrolled by District



9

Participation by District Size

| Size Category | Number of Districts | Jointly Enrolled |
|---------------|---------------------|------------------|
| < 300 | 59 | 24.6% |
| < 600 | 106 | 26.0% |
| < 1000 | 83 | 22.1% |
| < 2500 | 79 | 23.9% |
| < 7500 | 22 | 23.8% |
| > 7500 | 10 | 20.2% |



10

Courses Taken

Jointly enrolled students took an average of 2.6 courses, well above the national average of 1.4 courses.

Foreign Language

English Language and Literature

Information Technology

Architecture & Construction

Social Sciences and History

Mathematics

Healthcare Sciences



Presenter:

Jeremy VARNER, Administrator
Iowa Department of Education
Division of Community Colleges
Bureau of Adult, Career, &
Community College Education
(515) 281-8260
jeremy.varner@iowa.gov



COMMUNITY COLLEGES
BUREAU OF ADULT, CAREER, & COMMUNITY
COLLEGE EDUCATION

More information

Joint Enrollment Report 2012, Iowa Department of Education
[http://www.educateiowa.gov/index.php?option=com_docman
&task=cat_view&gid=1008&Itemid=4434](http://www.educateiowa.gov/index.php?option=com_docman&task=cat_view&gid=1008&Itemid=4434)
Senior Year Plus Program Guidance and Information
[www.iowa.gov/educate/index.php?option=com_content&vie
w=article&id=1856&Itemid=2596](http://www.iowa.gov/educate/index.php?option=com_content&view=article&id=1856&Itemid=2596)

