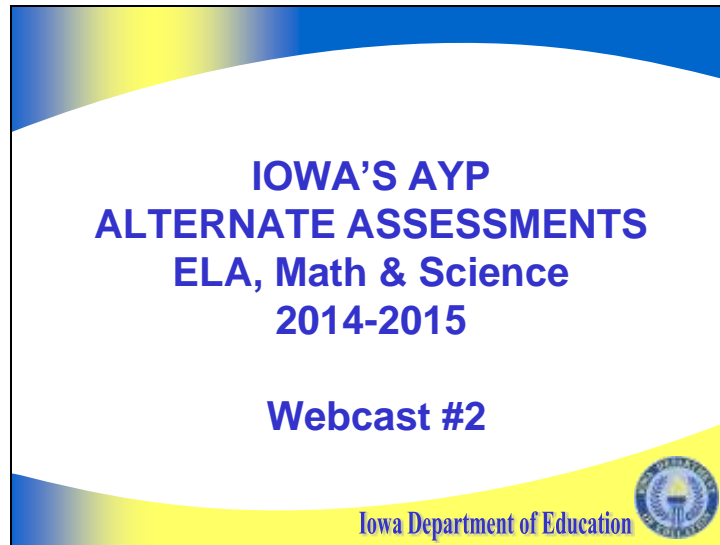
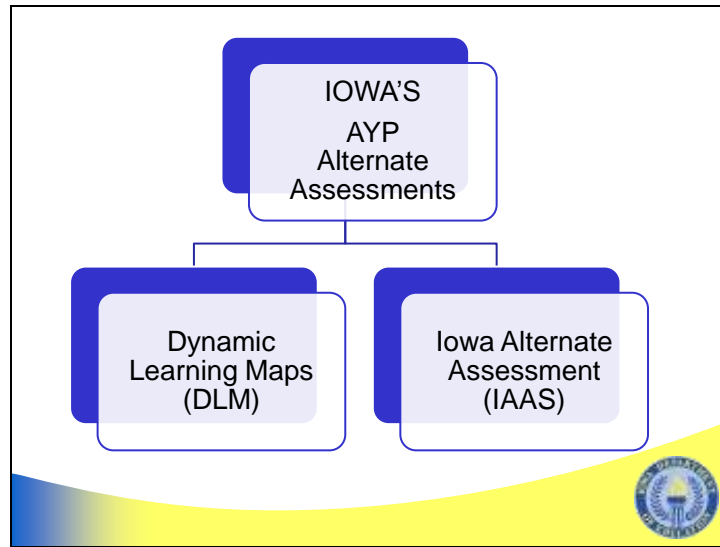


Slide 1



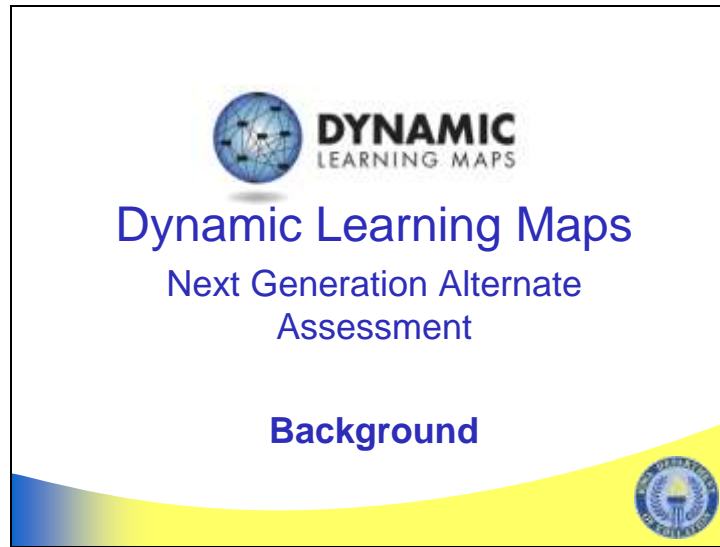
Welcome to Iowa's AYP Alternate Assessments for the 2014-2015 school year. This is the second presentation in a series of eight that address Iowa's AYP Alternate Assessments. In this presentation we will examine Iowa's ELA, Math, & Science Alternate Assessments.

Slide 2



In the 2014-2015 school year Iowa's AYP Alternate Assessments will include Dynamic Learning Maps in the content area of ELA and math and Iowa Alternate Assessment Science


Slide 3



Dynamic Learning Maps is Iowa's Next Generation Alternate Assessment in ELA and math. In this presentation, we will examine the background of the Dynamic Learning Maps assessment.

## **Background**

- The adoption of the Iowa Core State Standards required Iowa to develop a new Iowa Alternate Assessment

The slide features a decorative footer with a blue-to-yellow gradient and the Iowa Department of Education logo in the bottom right corner.

The adoption of the Iowa Core State Standards required Iowa to develop a new Iowa Alternate Assessment.

## Background

- In this effort, Iowa joined Dynamic Learning Maps (DLM), a multiple-state consortium that has developed a new type of computer-delivered alternate assessment



In this effort, Iowa joined Dynamic Learning Maps (DLM), a multiple-state consortium that has developed a new type of computer-delivered alternate assessment.

## Background

- DLM provides accessibility by design and is guided by the core belief that all students should have access to challenging, grade level content which is reflected in the Iowa Core ELA and Math Essential Elements



DLM provides accessibility by design and is guided by the core belief that all students should have access to challenging, grade level content which is reflected in the Iowa Core ELA and Math Essential Elements.

## Background

- The DLM system provides the opportunity for students with significant cognitive disabilities to show what they know in ways that traditional alternate assessments do not allow



The DLM system provides the opportunity for students with significant cognitive disabilities to show what they know in ways that traditional alternate assessments do not allow.


Slide 8



For more information regarding the Dynamic Learning Maps please visit their website at [dynamiclearningmaps.org](http://dynamiclearningmaps.org)




Slide 9



Iowa Alternate Assessment  
Science (IAAS)

**Background**




The slide features a white background with a blue and yellow curved gradient at the bottom. The Iowa Department of Education logo is positioned at the top center and bottom right. The text "Iowa Alternate Assessment Science (IAAS)" is centered in blue, and the word "Background" is centered below it in bold blue.

In this presentation, we will examine the background of Iowa's Science AYP alternate assessment.

## Background

- Iowa Alternate Assessment Science (2001)
  - Since its inception in 2001, several enhancements have been made
    - In 2011, the Department added a multiple reporting period which allowed growth to be measured, standardized the number of items teachers are required to instruct, assess, and report out on for scoring




Since its inception in 2001, several enhancements have been made.

In 2011, the Department added a multiple reporting period which allowed growth to be measured, standardized the number of items teachers are required to instruct, assess, and report out on for scoring.

## Background

- In 2013, Iowa Alternate Assessment Online Teacher Training
  - required by all teachers who administer the Iowa Alternate Assessment



Beginning in 2013, all teachers who administer the Iowa Alternate Assessment are required to participate in Online Assessment Training. More information regarding IAAS online teacher training is outlined in the IAAS Process webinar.



For more information regarding Iowa Alternate Assessment Science, please visit their website at [iowaalternateassessment.org](http://iowaalternateassessment.org)

**Contact Information**

- Emily Thatcher-IAA Consultant
  - Email: [emily.thatcher@iowa.gov](mailto:emily.thatcher@iowa.gov)
  - Phone: 515-281-3500



Please provide comments and questions regarding this webcast in the survey link. For additional information on Iowa's AYP Alternates for the 2014-2015 school year, please contact Emily Thatcher.