

CareerSafe®

StartSafe. StaySafe.®

Safety Education for America's Future.

Since 2003, more than 398,000 students have completed the OSHA 10-hour training course through CareerSafe's online testing service, with approximately 50,000 students completing the course annually. By providing fundamental safety knowledge to entry-level workers, students enter the workforce more confident, capable and efficient. CareerSafe's OSHA authorized programs give students the opportunity to lay a long-term groundwork for future career success. At a cost of \$25 per student, CareerSafe provides the most affordable OSHA training programs in the country. America's youth are our future. Make safety a priority.



Making an Impact.
More than 398,000 students have taken CareerSafe training since 2003.

CareerSafe has made a significant contribution in Region 6 by providing low cost safety training for the future employees of our workplaces. Helping create a workforce that starts out with a basic understanding of safety and health on the job will ultimately help lower the accidents and injuries we are all trying to prevent.

R. Dean Whingo, CIH, CSP Assistant Regional Administrator
Dallas Regional Office, Texas ESC Region 10

CareerSafe—Training Across Industries.

CareerSafe's OSHA 10-hour general industry training and construction industry training courses provide applicable laws, guidelines, behaviors, and equipment uses. Students in each of the 16 career clusters will find valuable safety training information through CareerSafe's OSHA authorized courses. From Health Science to Architecture and Business Administration to Manufacturing, students must be prepared for any safety situation in the workplace. By applying interactive and scenario-based online safety training, students can apply their knowledge in real situations in the classroom and on the job.

Harlingen CISD is a predominantly economically-disadvantaged and Hispanic school district in the lower Rio Grande Valley of Texas. CareerSafe has given our students a huge advantage as they apply for trade and industry positions, as well as higher education slots.

Gil Tello, Director of Career and Technical Education
Hoffingen CISD



The web-based delivery of the OSHA content is relevant and engaging for students, and is easily accessible in the classroom or from any computer with web access.

Chad A. Meadlin, Coordinator
Trade and Industrial Education
Fairfax County Public Schools

Knowledge Anywhere - Anytime.
Students have the ability to access safety training at anytime—the perfect program for the working student.

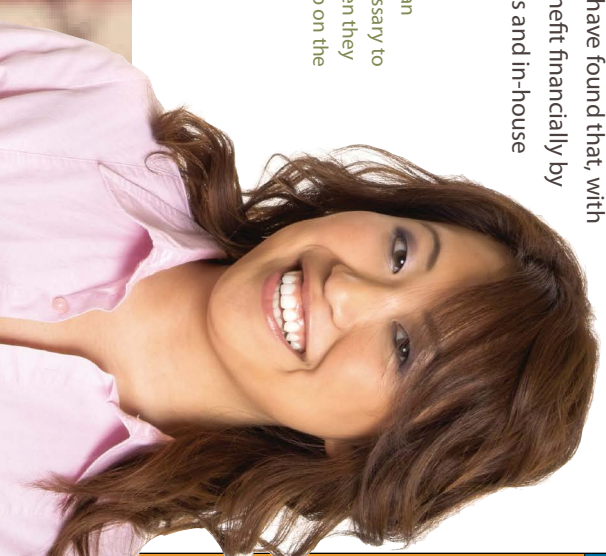


Creating a Stir in Communities.

The CareerSafe program has a positive impact across all aspects of society. By affording students better, higher paying jobs and promoting the importance of safety in all situations, this program is reaching beyond the classroom. This results in benefits for the entire community. By providing students with safety training, educators gain the satisfaction of knowing they have provided a quality education, improved their students' employability and reduced their chances of becoming injured in the workplace. Furthermore, corporations have found that, with CareerSafe's 10-hour OSHA training courses, they benefit financially by saving on workers compensation claims, medical bills and in-house employee safety training.

CareerSafe Online is an additional resource that has given me an opportunity to equip students with skills and knowledge necessary to practice safety throughout life. The look on students' faces when they successfully complete the training and their certificate pops up on the screen is priceless.

Linda McNeal, Manicure Specialty Instructor
Taylor Career Center, Beaumont, TX



The CareerSafe safety course gave me a great perspective on how to keep others and myself safe from injury while working or while in an area where hazardous actions were taking place. The topics were all very clearly discussed, and I feel that I have obtained vast knowledge from it. The course is a first-class means of learning.

High School Senior, Buckeye Career Center,
New Philadelphia, OH

"Houston ISD has been using the CareerSafe Online program for the past 2 years to educate over 12,500 high school students on Federal OSHA standards and regulations. This online training program has provided these students with a distinct advantage in the classroom and in the workforce. Through CareerSafe, our students have gained valuable knowledge and insight in how to perform their jobs safely and responsibly."

Jettie Greene
Curriculum Specialist, Houston ISD.

Seamless Classroom Integration.

Creating Classroom Efficiencies.
CTE programs can rely on CareerSafe to provide vital safety knowledge and constant reliability.

CareerSafe's online training program offers convenience, not only for students taking the course, but also for the teachers who find that classroom integration comes easily with CareerSafe. The courses are 100% interactive and self-administered.

CareerSafe is currently used in school districts in every state and is a valued resource in some of the largest districts in the country. The online format allows students to work at their own pace and truly conceptualize each module topic. By having CareerSafe available as an online safety training course, over 398,000 students are safer today than they were yesterday.



The teachers I have worked with have reports from their students that they were given a job over students who applied without certifications.

Libby McClung, Coordinator
Career & Technical Education,
Fort Bend ISD



A Million Safer:
The National Youth
Safety Initiative™



➤ Safety Education for America's Future.

➤ Affordable OSHA Training – Anytime, Anywhere.

➤ Positively Impacting Your Community.

➤ **CareerSafe**
StartSafe. StaySafe.®

CareerSafe Online
T. 1.888.614.SAFE (7233)
info@careersafeonline.com
www.careersafeonline.com



What is CareerSafe?

The CareerSafe online program is the first of its kind. It is an interactive, Y2Y (Youth To Youth) online program that addresses the high priority safety training needs of young workers.

The CareerSafe philosophy is "StartSafe. StaySafe." To StartSafe and StaySafe students will learn about their rights and responsibilities in the workplace and gain valuable knowledge about how they can protect themselves and others.

Throughout the program, students explore a wide range of topics including laws, guidelines, behaviors, and equipment, all intended to help them StartSafe and StaySafe.

Need for CareerSafe

Every five days, one teen is killed on the job. According to the National Institute of Occupational Safety and Health there are about 70 work-related fatalities each year among this young work population. Additionally, more than 200,000 young workers are injured on the job; 70,000 of them require emergency room treatment. Further, data from the Centers for Disease Control and Prevention (CDC) indicate that younger workers continue to have the highest rates of work-related deaths, injuries, and illnesses.

Expressing concern for young workers, former Secretary of Labor Elaine L. Chao, stated, "Today's youth will be the workforce of the 21st Century. One of my priorities for the U.S. Department of Labor is to assist America's youth in preparing to enter that workforce."

CareerSafe is making a valuable contribution to the Department of Labor's efforts to prepare young people for a safe and prosperous future in the workplace.

Delivery Costs & Payment

Since we believe in the importance of safety training for every student, we are committed to delivering the CareerSafe program at a reasonable cost to students, educators, and schools. The cost for the 10-Hour General Industry online course is **\$25 per student**.

For more information regarding payment options and instructions, visit our website or email us at orders@careersafeonline.com.

Benefit for Students

Once a student successfully completes the Online 10-Hour General Industry course, the student receives a wallet card from OSHA Training Institute (OTI).

The wallet card demonstrates that the student has the fundamental safety knowledge needed in the workplace.

Young workers develop a safety mindset and acquire marketable skills for a competitive edge.

Course Description

CareerSafe's 10-Hour OSHA General Industry training program consists of 21 interactive modules discussing various safety tips and procedures one should follow while in the workplace.

The modules include:

- Introduction to OSHA (Part 1)
- Introduction to OSHA (Part 2)
- StartSafe StaySafe©
- Flammable & Combustible Liquids
- Hand and Power Tools
- Materials Handling
- Walking Working Surfaces
- Stairways & Ladders
- Disaster Preparedness
- Welding & Cutting
- Safety & Health Programs
- Fall Hazards
- Personal Protective Equipment
- Bloodborne Pathogens
- Electrocution Hazards
- Fire Prevention and Protection
- Machine Guarding
- Hazardous Communication
- Ergonomics
- Preventing Workplace Violence
- Emergency Action

Each module contains a brief assessment, which must be successfully completed before the student can move on to the next module. Once all modules have been viewed and the corresponding assessments are passed there is a comprehensive final assessment.

Once the student successfully completes the course a printable certificate is available. The student will also receive their OSHA 10-Hour General Industry wallet card by mail in 4-6 weeks.

I. Introduction to OSHA (Part 1)

This module will serve as an introduction to the OSHA Program, what it stands for, and its purpose.

This module covers:

- Explain why OSHA is important to workers
- Explain worker rights under OSHA

II. Introduction to OSHA (Part 2)

This module will serve as an introduction to the OSHA Program, what it stands for, and its purpose.

This module covers:

- Discuss employer responsibilities under OSHA
- Discuss the use of OSHA Standards
- Explain how OSHA inspections are conducted
- Utilize helpful worker safety and health resources
- Explain worker rights under OSHA

III. Fall Hazards

This module is designed provide students with an overview of the Occupational Safety and Health Administrations (OSHA's) guidelines and different fall protection methods.

This module covers:

- OSHA's regulations that protect workers on elevated surfaces
- Primary fall protection methods
- Explains how guardrails help prevent falls
- Explains guidelines for using safety nets
- Components of personal fall arrest systems

IV. Flammable & Combustible Liquids

In this module you will learn the safety concerns and necessary precautions you need to be aware of when working around flammable and combustible liquids.

This module covers:

- Identify the two primary hazards associated with flammable and combustible liquids
- Define important terms related to flammable and combustible liquids
- Describe two ways to avoid an explosion or fire, and
- Identify potential sources of ignition

V. Preventing Workplace Violence

The purpose of this module is to raise your awareness about workplace violence and help you to StartSafe and StaySafe by providing you some tips on how you can prevent or avoid violent incidents both in your personal life *and* in the workplace.

This module covers:

- What is violence?
- Who is at risk?
- Prevention strategies:
 - Employer and employee involvement
 - Warning signs
 - Coping skills

VI. Welding & Cutting

This module provides information on safety concerns and precautions when using welding and cutting equipment.

This module covers:

- Describe the requirements placed on employers by the General Duty Clause
- Demonstrate a thorough knowledge of the safe use of equipment associated with gas welding and cutting
- Demonstrate an understanding of the safe use of equipment associated with arc welding and cutting properly
- Describe the various methods of ventilation and protection used in various working environments
- Describe the dangers associated with both chemical and physical agents when welding and cutting

VII. Emergency Action

The purpose of this module is to help you StartSafe and StaySafe in case you are faced with an emergency situation. This module helps demonstrate the importance of planning for any emergency that might occur.

This module covers:

- The importance of emergency planning
- General emergency preparedness
- What is an Emergency Action Plan (EAP)?
- Emergency guidelines
 - Tornados
 - Earthquakes
 - Hurricanes
 - Fires
 - Chemical Release
 - Hostile Act

XX. Ergonomics

The purpose of this module is to help you understand the science of ergonomics and how to prevent ergonomic related injuries and illnesses.

This module covers:

- What is ergonomics?
- Why ergonomics matters
- Risk factors affecting ergonomics
- Posture
- Biomechanics
- Lifting techniques
- Applying ergonomics in everyday situations

VIII. Walking Working Surfaces

This module provides information on the safety concerns and precautions associated with various walking and working surfaces.

This module covers:

- Describe the environments in which OSHA's standards for walking-working surfaces do and do not apply
- Describe the general requirements for the maintenance of walking-working surfaces
- Define the terms floor opening, floor hole, and wall opening and describe the various methods for guarding them and other walking-working surface conditions

XVIII. Hand & Power Tools

This module will cover how to StartSafe and StaySafe while using hand and power tools.

This module covers:

- List the hand and power tool safety rules
- Identify the precautions essential to the safe use of different types of tools
- Name the guarding techniques that apply to hand and power tools

XI. Safety & Health Programs

This module will introduce the concerns and benefits the Safety and Health Programs cover.

This module covers:

- Describe the major elements of an effective occupational safety program
- Identify the methods for hazard identification
- List the methods used in hazard prevention and control

XIV. Personal Protective Equipment (PPE)

The purpose of this module is to provide an overview of Personal Protective Equipment (PPE) designed to protect your head, face, eyes, ears, hands, feet, respiratory tract, and body from injury and discuss the importance of selecting the PPE that is right for the job you may perform.

This module covers:

- Why PPE matters
- Eye and face protection
- Head protection
- Hearing protection
- Hand protection
- Foot protection
- Respiratory protection
- Full body protection

XIII. StartSafe. StaySafe.

This module will serve as an introduction to the Career-Safe program and provide an overview of OSHA and the "StartSafe. StaySafe." Philosophy.

This module covers:

- What is CareerSafe?
- What is safety?
- Why safety matters to you
- Your legal rights
- What is OSHA?
- The "StartSafe. StaySafe." Philosophy
- What it means to StartSafe
- What it means to StaySafe

XII. Materials Handling

This module covers the safety concerns and necessary precautions you need to be aware of when handling, storing, using, and disposing of materials.

This module covers:

- List main injuries that occur during handling, storage, use, and disposal of materials
- Name the ways to prevent injury when performing manual lifting
- Identify ways to eliminate hazards that may lead to injury when using forklifts, cranes, or slings to handle materials
- List actions that can reduce or eliminate hazards when storing, using, or disposing of materials

XIX. Hazardous Communication

The purpose of this module is to help you be aware of the potential hazards of chemicals that you may encounter in the workplace.

This module covers:

- Why chemical safety matters
- Chemical safety overview
- The “Right-to-Know” Law
- HAZCOM Program
- Material safety data sheets
- Warning labels
- Employee training

IX. Electrocuting Hazards

This module provides information that helps you recognize and avoid common electrocution hazards in your work environment

This module covers:

- Common electrocution hazards
- Types of electrocution hazards
- How to protect yourself from electrocution hazards
- Recognize employer requirements and to protect workers from electrocution hazards

XV. Disaster Preparedness

This module provides information on the safety concerns and necessary precautions you will need to be aware of when preparing to handle a disaster situation.

This module covers:

- List the different types of disasters
- Describe preparation strategies for each type of disaster
- Identify emergency supplies needed for disasters
- Identify the requirements for exits and exit routes

X. Stairways & Ladders

This module provides information on the safety concerns and precautions associated with various types of stairways and ladders.

This module covers:

- Describe the different types of ladders
- Describe the safety guidelines and requirements for ladders used at a construction site
- Describe the different types of stairs
- Describe the safety guidelines and requirements for stairways used at a construction site.

XVII. Fire Prevention and Protection

This module will cover the precautions to take to prevent fires and the steps to take in order to protect yourself if a fire occurs at your workplace. Planning ahead in case there is a fire allows you StartSafe, and knowing what to do to protect yourself and others during a fire enables you to StaySafe.

This module covers:

- Describes how to protect yourself and others in the event of a fire
- State the key components of a fire prevention plan
- Explains the steps to take to identify, avoid and control fire hazards

XXI. Machine Guarding

The purpose of this module is to help you be as safe as possible when you are working with machines or in areas where machines are being operated.

This module covers:

- Why machine guarding matters
- Types of mechanical hazards
- Methods of machine guarding namely
 - Guards
 - Devices and
 - Location or Distance
- Safety aids
- Safe work practices
- Proper training

XVI. Bloodborne Pathogens

In this module you will learn what bloodborne pathogens are as well as discover ways in which you can StartSafe and StaySafe around blood and other bodily fluids that could be carrying a harmful disease.

This module covers:

- Understanding pathogens
- Hazards of bloodborne pathogens
- How bloodborne pathogens are transmitted
- Who is at risk
- Reducing your risk of exposure
- OSHA requirements

To learn more about the *CareerSafe Program* please visit our website

<http://www.careersafeonline.com>

>CareerSafe Professional Development Program (CPDP)



The CareerSafe Professional Development Program (CPDP) was created for educators, administrators, and other individuals within the educational community to enhance workplace and classroom safety awareness. *The goal* - better equip education professionals with the tools and resources necessary for increased safety orientation in the classroom and as a result, improve the learning experience for students.

Through the program, Educators will receive professional development hours as an added benefit. Because hours attained vary from state to state, it is important to confirm hours received from CPDP with administration or state directors.

The CPDP program challenges participants to learn more about OSHA's safety standards to create a safer environment in the classroom, lab and school setting. Participants learn through a web-based, interactive curriculum and are provided with an individual programmatic safety portfolio and implementation plan.

Each teacher that completes the CPDP program receives the following:

- One completed CareerSafe Online OSHA 10-Hour course.
- Teachers can select either the OSHA 10-Hour General Industry or the OSHA 10-Hour Construction Industry course, whichever best aligns with their classroom curriculum.
- Electronic access to the CareerSafe Online Fact Sheets following each topic module for easy printing.
- CareerSafe Lesson Plans and Enhanced CareerSafe PowerPoint presentations to align with individual classroom needs.
- Development of programmatic learning exercises for each CareerSafe topic module for in class discussion and exercises. (Student led classroom safety audit, emergency preparedness plan, etc.)
- Completed NIOSH/CDC Safety Checklist for each classroom and lab setting. The Safety Checklist provides the following classroom benefits:
 - Educators receive step by step instruction on how to analyze their classroom setting to make it a safe and healthy area for students
 - Develop a customized, programmatic safety checklist and portfolio based off of the 16 Career Clusters
 - Establishment of an inclusive culture that emphasizes the importance of classroom and lab safety and OSHA's role within the school environment
 - School administrator evaluation and sign-off for teachers to receive their individual school approved PDP credits.

CareerSafe Online is committed to delivering the CareerSafe Professional Development Program at a reasonable cost. One year of access and an OSHA 10-Hour wallet card is only \$50.00 per teacher.

For more information, please visit the CareerSafe web site, <http://www.careersafeonline.com>.

The CareerSafe Online Federal OSHA Training program proposes to work with the Iowa Department of Education to help train and educate 200 Industrial Tech teachers on the foundational skills of classroom safety through the CareerSafe Professional Development Program. The CareerSafe Professional Development Program (CPDP) was created for educators, administrators and other individuals within the educational community to enhance workplace and classroom safety awareness. *The goals – better equip* education professionals with the tools and resources necessary for increased safety orientation in the classroom and as a result, improve the learning experience for students. Through the program, Educators will receive professional development hours as an added benefit.

The CPDP program challenges participants to learn more about OSHA's safety standards to create a safer environment in the classroom, lab and school setting. Participants learn through a web-based, interactive curriculum and are provided with an individual programmatic safety portfolio and implementation plan.

Each teacher that completes the CareerSafe PDP receives the following:

- Industry Recognized Certification: Teachers will receive their OSHA 10-Hour wallet card from Federal OSHA.
- Supplemental Classroom Tools:
 - Access to CareerSafe Online Fact Sheets, Lesson Plans, and PowerPoint Presentations to align with individual classroom needs.
 - Programmatic Learning Exercises for each CareerSafe topic module for in class discussion and exercises. (Student led classroom safety audit, emergency preparedness plan, etc.)
- NIOSH/CDC Safety Checklist for each classroom and lab setting.
- The Safety Checklist provides the following classroom benefits:
 - Educators receive step-by-step instruction on hazard recognition and hazard analysis of their physical classroom setting to make it a safe and healthy area for students.
 - Develop a customized, programmatic safety checklist and portfolio based off of the 16 Career Clusters.
 - Establishment of an inclusive safety culture that emphasizes the importance of classroom and lab safety.
 - School administrator evaluation and sign-off for teachers to receive their individual school approved Professional Development Credits.

Request for Funding

The funds requested in this proposal are to deliver the program to Iowa Trade and Industrial Tech Teachers. CareerSafe® Online has already assumed the development costs of the proposed off-the-shelf Professional Development Program. The cost of the program is only \$50.00 per teacher.

Total amount requested is \$50.00 x 200 Teachers = \$10,000