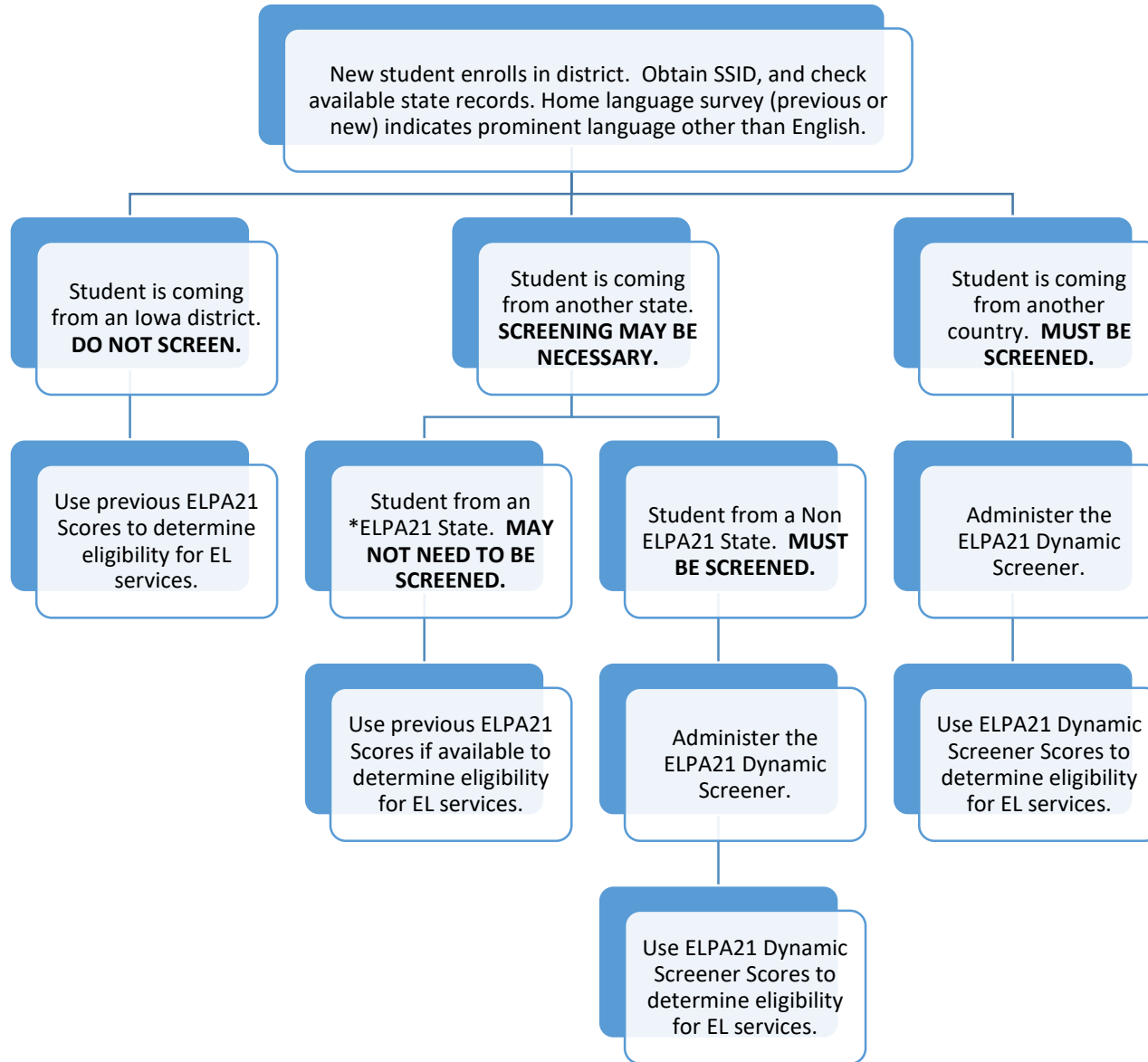


Addendum L: Iowa K-12 EL Screening Flowchart: Is Screening Necessary?

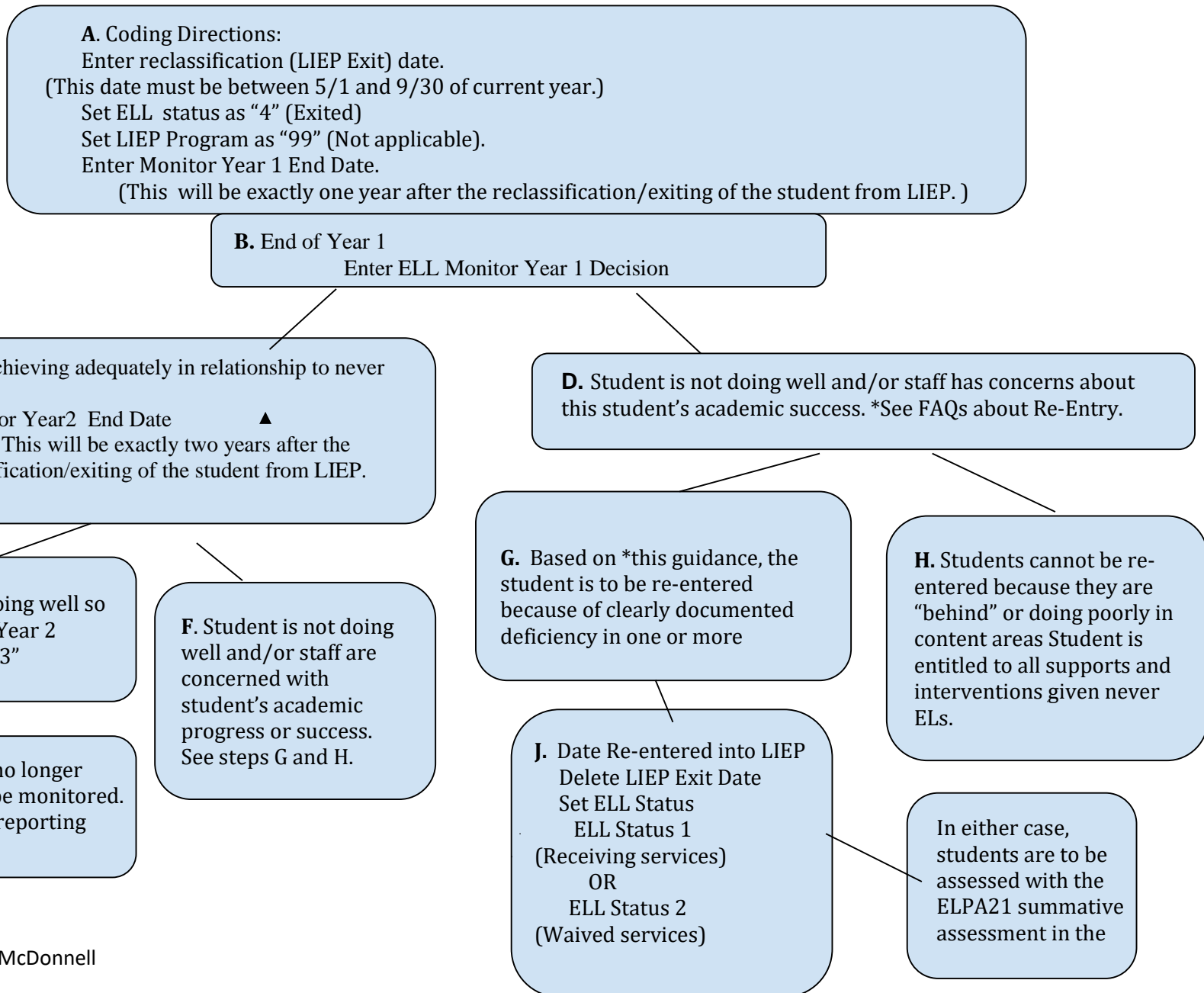
Keep in mind, the point of screening is to rule out the possibility that the student may be at risk for academic difficulties due to lack of skill with the English language. In essence, screening asks: **Might a lack of English language proficiency hinder this student's learning of grade level content, or is (s)he already proficient in meeting Iowa's grade level ELP standards?**



*ELPA21 States: Arkansas, Iowa, Nebraska, Louisiana, Ohio, Oregon, Washington, & West Virginia

Addendum L: Coding Guide to Reclassifying (“Exiting”) English Learners

Students *must* be reclassified (i.e. “Exited”) from EL services upon scoring proficient on the ELPA21 (per ESSA and OCR). If a student enters the district with a proficient score from an ELPA or non ELPA21 state, that score may be accepted. [Screening Placement Flowchart](#).



[*FAQs/Re-Entry](#)

DE Contact: Pam McDonnell